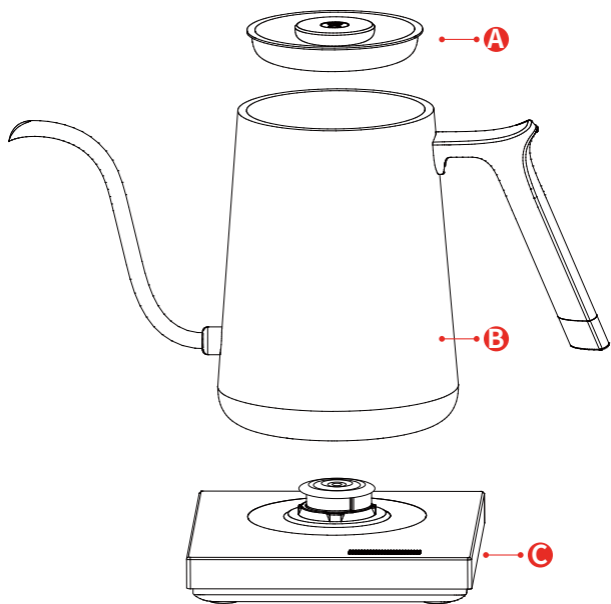


每
SMART

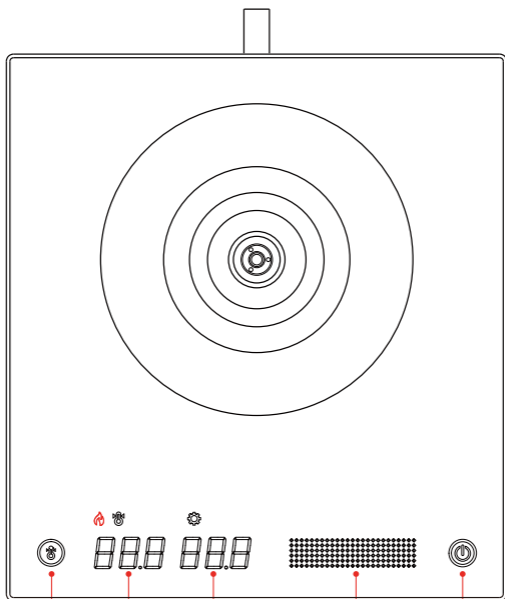
标准版-控温电热手冲壶
使用说明书



A 壶盖

B 壶身

C 控制底座



1

2

3

4

5

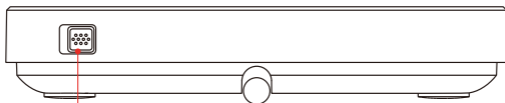
保温键

实际温度值

目标温度值

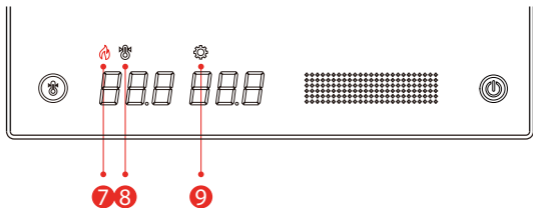
触摸温度设定条

启动/暂停键



6

电源开关



- 7 加热指示灯：本灯亮表示本产品正在处于加热状态。
- 8 保温指示灯：本灯亮表示本产品正在处于保温模式。保温模式下，如实际水温低于目标温度值，会自动开启加热使得水温保持在目标温度值。
- 9 设定指示灯：本灯亮表示产品正处于温度设定状态。

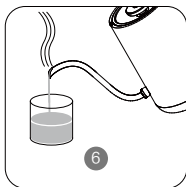
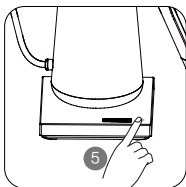
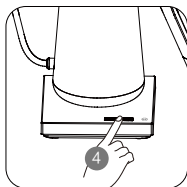
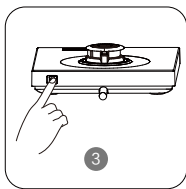
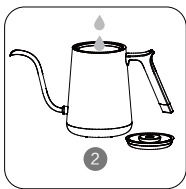
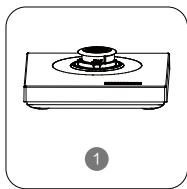
使用说明

使用前请确认您使用的插座功率可否承载本产品。

壶中注水请勿超过标识的最高刻度（700ml）。

首次使用时建议通过煮沸两次以清洗本壶内部。

1. 将本产品放置于平整桌面上使用。
2. 拿下盖子，向壶内注水。
3. 确认将机身背后电源打开。
4. 通过轻轻触摸左右滑动设定条，将目标温度值设置至你想要的加热目标温度。
5. 按下启动键，将会开始加热直至设定温度。
6. 缓慢倒出热水，冲泡热饮。



使用注意事项

01. 加水请勿超过标识的最高水位刻度，避免液体溢出进入连接器。
02. 加热时请盖好壶盖。当水沸腾时，请不要移动壶盖。
03. 该设备不得用于身体上，感官上和精神上有限制的人群（包括儿童），或者是缺乏经验的人群，除非他们接受过监督或指导。
04. 儿童应当受到监督以确保其不会玩耍器具。
05. 请勿自行拆装、维修本产品。如果电源软线损坏，为了避免危险，必须由制造商、其维修部或类似部门的专业人员来更换。
06. 请勿将水壶底部及控制底座浸入水中或其他液体中。
07. 请勿在壶中无水时干烧。
08. 加热中及加热后请勿触摸壶身外壁，以免烫伤。
09. 不使用本产品时请关掉电源及拔出插头。
10. 手冲壶仅在提供的底座上使用。
11. 本产品在高海拔地区使用时，不保证能够加热至设定温度，且有沸腾溅出风险。
12. 如加热非纯净水，水壶内壁可能会产生结垢，属于正常现象。
13. 该设备用于家庭和类似商店、办公室和其他工作环境中的员工厨房区；农舍；旅馆、汽车旅馆和其他居住环境中的顾客使用；床和早餐型环境。
14. 请按本说明书的要求使用水壶，避免误用对使用者造成伤害。



产品参数

01. 产品名称：标准版-控温电热手冲壶
02. 温度误差：正负2摄氏度（视不同地区的气压）
03. 保温范围：45摄氏度-98摄氏度
04. 储运温度：摄氏-10度至摄氏55度
05. 使用温度：产品表面 摄氏-10度 至 摄氏 60度
06. 按键控制：电容式触控按键，无需用力按压，以及电容式滑动触控条
07. 辅助提示：内置蜂鸣器与震动马达
08. AC220V 发热部件功率1500W 容积700ml，控制与数据部分功率不超过5W

常见问题

Q: 智能版与标准版有什么区别？

A: 智能版是在标准版的基础上增加了蓝牙&WIFI功能，可与手机互联，在手机上进行操作。两款的外观设计上是一致的。

Q: 为什么连接电源后屏幕显示不正常/无法正常烧水？

A: 因为鱼Smart温控壶使用1500W大功率加热，请务必使用能提供1500W功率的稳定电源（如：使用外接插线板时，请注意插线板背面标识功率；同时也建议不要与其它大功率电器在同一电源下使用，避免总功率不足）

Q: 温控壶出现干烧怎么办？

A: 当壶内无水或水量低于MIN线时，误操作了加热开关；安全控温装置会自动断电。由于干烧可能会导致壶内感温元器件损坏，此种情况不在保修范围内。出现干烧情况，先关闭电源开关，然后往壶内加水，等壶内降温后，重新恢复电源即可。

Q: 为什么显示的实际温度比预设温度高？

A: 建议壶内至少需要加入500ML以上的水量。由于鱼Smart温控壶加热功率为1500W，过少的水量会导致温控器在启动加热后水温快速上升。

未
SMART



品名：标准版-控温电热手冲壶

型号：F07-1500 / F07W-1500 / F08-1500 / F08W-1500

内容物：壶盖、壶身、底座、电源线、说明书

委托商：上海泰摩咖啡器具有限公司 质保期限：1年

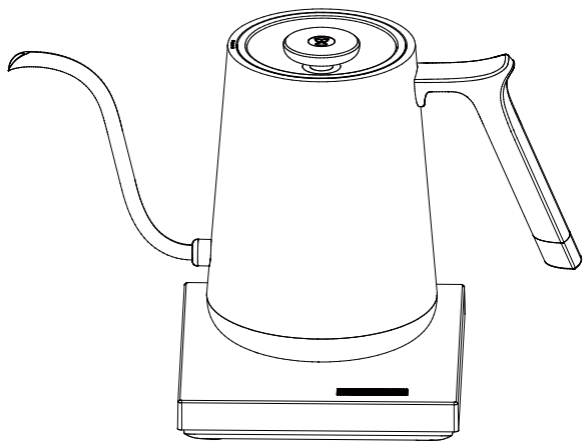
生产厂：江门市凡未通用电器有限公司

生产地址：江门市江海区南山工业区兴业路30号第3号厂房1楼B厂房

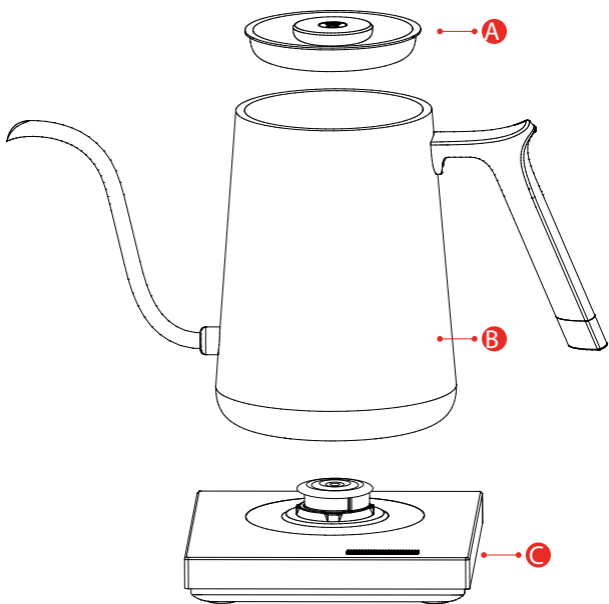
网址：www.timemore.com 电话：400-684-0200

CE FC

2018@TIMEMORE coffee co.,Ltd.All rights reserved.
Designed by TIMEMORE in China, Made in China



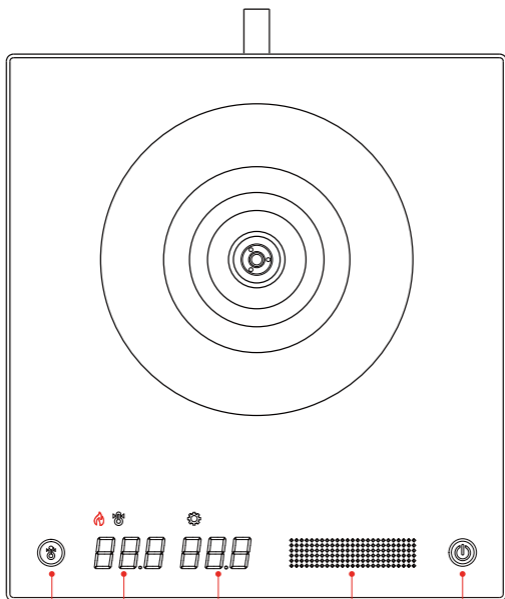
Electric Kettle
User Manual



A Lid

B Kettle

C Base



1

Keep warm

2

Real Temp. °C

3

Target Temp. °C

4

Slide slightly to set Temp.

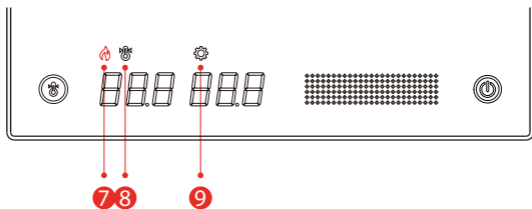
5

Stand-by



6

Power Toggle



- 7** Heating Indicator: shows if the kettle is heating or not.
Light on means heating.
- 8** Hold indicator: light on means the kettle is in HOLD mode.
When real Temp. is lower than the target Temp. , it will
heat up automatically till it reaches the target Temp.
- 9** Set-up indicator: light on means the device is in the Temp.
setting state.

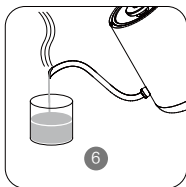
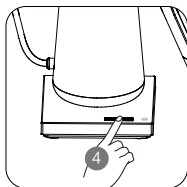
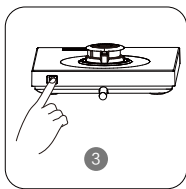
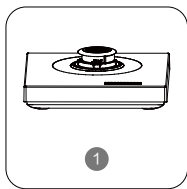
How to Use

Please confirm whether the power of the socket you are using can stand the device.

Do not fill water inside of the kettle above the Max point (700ml).

It is recommended to clean the kettle by boiling twice for the first time use.

1. Place the device on a flat surface for use.
2. Remove the lid and then add water.
3. Confirm the back power toggle is turned on.
4. Set the target Temp. by gently touching and sliding Touch Temp. Controller.
5. Press the start button and wait till the real Temp. reaches the target Temp.
6. Pour water slowly and start to brew.



Notes

01. Do not fill water inside of the kettle above the Max point. If the kettle is overfilled, boiling water may be ejected. Please avoid liquid spillage into the connector.
02. Cover the lid when it is heating. Do not move the lid when water is boiling.
03. The appliance is not to be used by persons (including children) with reduced physical, sensory or mental capabilities, or lack of experience and knowledge, unless they have been given supervision or instruction.
04. Children being supervised not to play with the appliance.
05. Do not disassemble or repair the device by yourself. If the power cable is damaged, please contact the manufacturer to repair to avoid danger.
06. Do not immerse the kettle's bottom or the base in water or any other liquids.
07. Do not boil when there is no water inside of the kettle.
08. Do not touch the surface of the kettle in or after boiling to avoid burns.
09. Please turn off the power toggle and pull out the plug when you don't use it.
10. The kettle can be used only on this base.
11. At high altitudes, this device may not be heat to the target Temp. and there might be a risk of boiling spillage.
12. It may get some limescale inside the kettle if you don't use purified water, which is a normal phenomenon.
13. This appliance is intended to be used in household and similar applications such as:
 - staff kitchen areas in shops, offices and other working environments;
 - farm houses;
 - by clients in hotels, motels and other residential type environments;
 - bed and breakfast type environments.
14. Please use electric kettle by User Manual, improper usage may cause harm.



Specification

01. Product Name: Electric Pour-over kettle Standard Version
02. Temperature error: plus or minus 2°C
(depending on the different atmosphere in different regions)
03. Range of Hold Temperature: 45°C – 98°C
04. Storage temperature: -10°C to 55°C
05. Use temperature: -10°C to 60°C
06. Button control: capacitive touch button, no need to press hard and capacitive sliding touch bar
07. Auxiliary notification: built-in buzzer and vibration motor
08. Power: AC220-240V~ Heating power: 1500W Capacity :700mL control and data power doesn't exceed 5W

Q&A

Q: What is the difference between smart version and Standard Version?

A: Smart version come with Bluetooth and WIFI function, can be connected to the phone in TIMEMORE App. The appearance of two version is same.

Q: Why does screen display abnormally?/ Why doesn't kettles work?

A: Fish Smart Electric kettle work with 1500W. Please make sure to use 1500W stable power (eg, Please pay attention to the power mark when use plug board ; It is not recommended use high power electrics at the same time to avoid insufficient total power)

Q: What should I do if the kettle dry-boiling?

A: User press the start heating button by mistake when no water or water is less than minimum level of the pot, Boil-dry protection would make kettle power off automatically. Since Dry-boiling may cause damage to the temperature-sensing part in the pot, this situation is not covered by the warranty. If the kettle dry-boiling, switch off the power first, then add some water in the pot, and switch on the power when the kettles colds down.

Q:Why the screen display the temperature is higher than I set?

A: It is recommended add more than 500ml water in the pot. Since Fish Smart Electric Kettle come with 1500W, temperature controller make heating speed fast when less water in the pot.

每
SMART



Name: Electric Kettle

Model: F07-1500 / F07W-1500 / F08-1500 / F08W-1500

Contents: Lid, Kettle, Base, Power cable, User' manual

Warranty period: 1 year

Designed by: Shanghai TIMEMORE Coffee Equipment Co., LTD.

Assembled by: Jiangmen Fanwei General Electric Co.,LTD

Factory ADD: 1st FL 3rd Building, Xingye Rd, Nanshan Industrial Zone,

Jianghai District, Jiangmen

Web: www.timemore.com Tel: 400-684-0200

